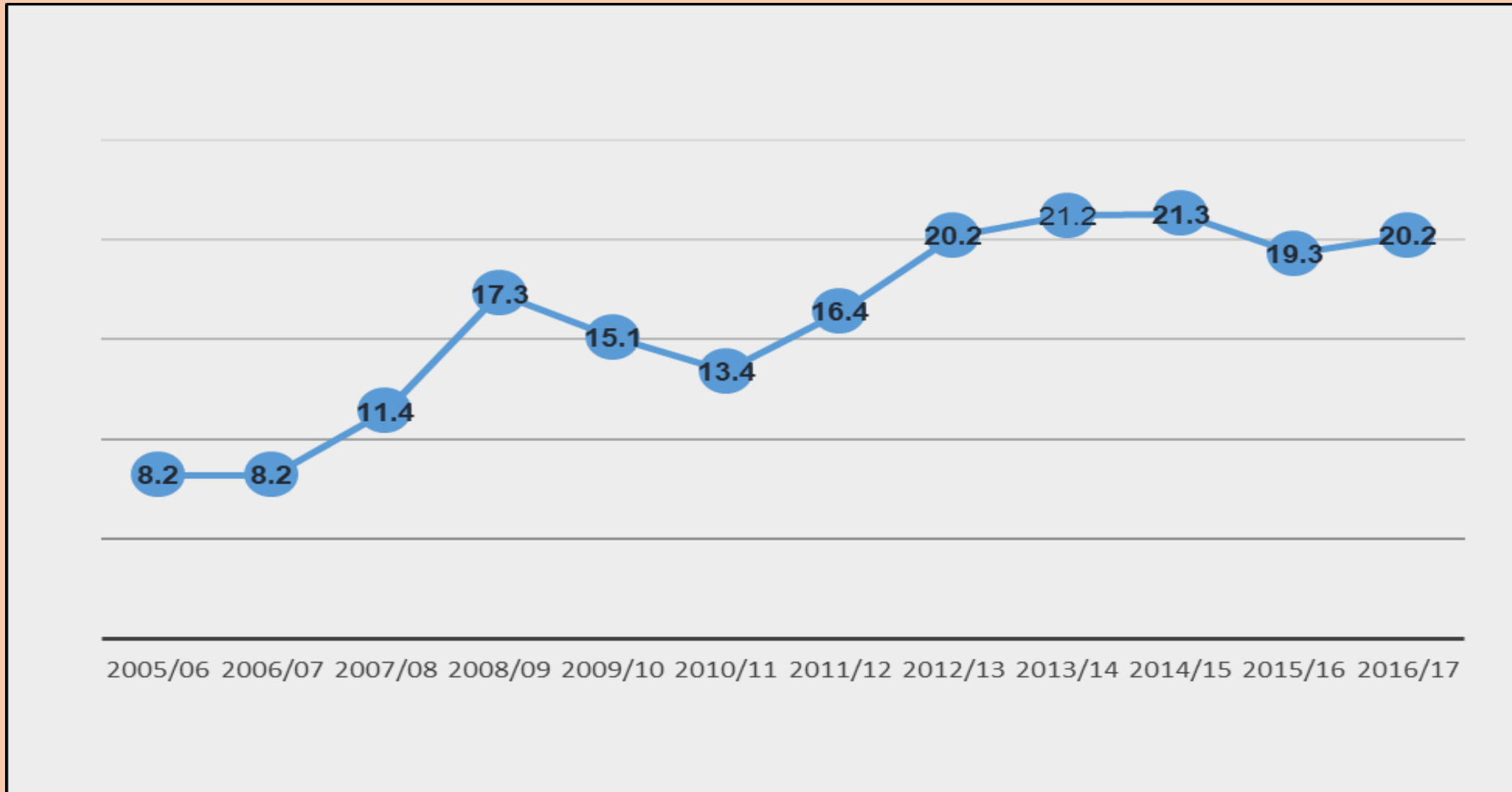


# Tertiary Education Enrolment trends

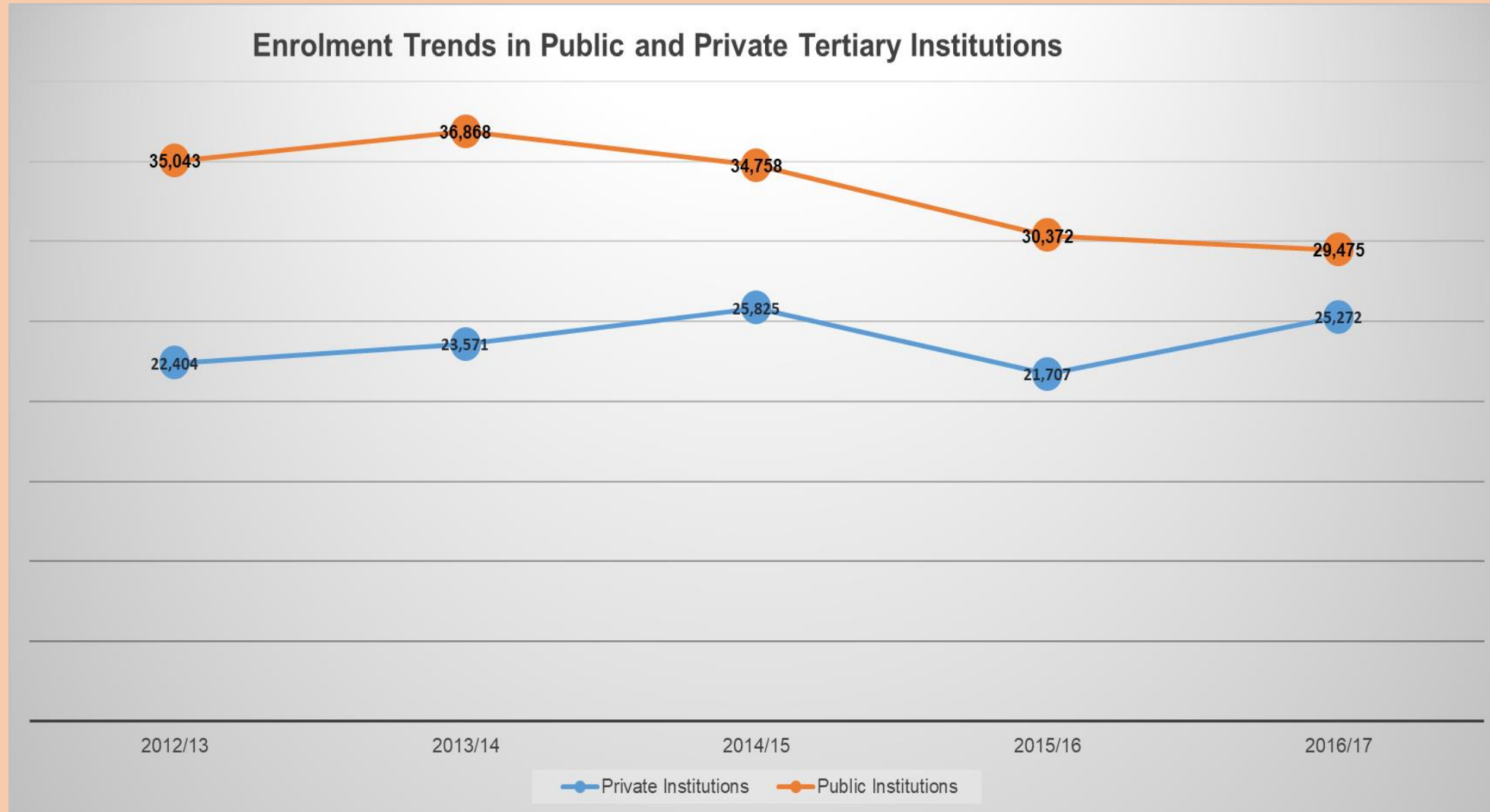


# PARTICIPATION IN TERTIARY EDUCATION

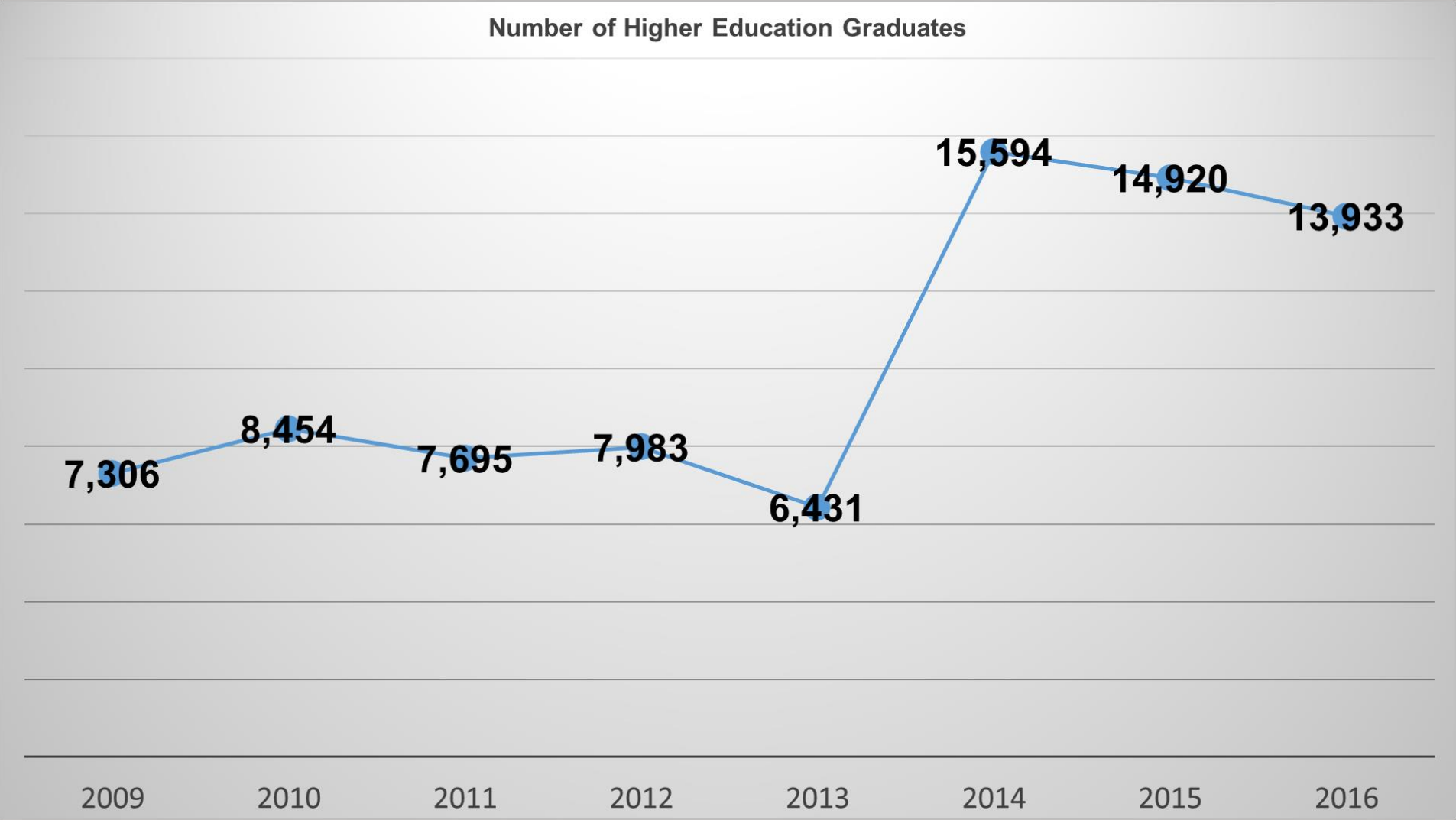
Gross Tertiary Enrolment Ratio (%) - 2009/10 - 2016/17



## Tertiary Education Enrolment Trends by Type of Education Institution – 2012/13 – 2016/17



# Throughput



# Enrolment In Tertiary Education

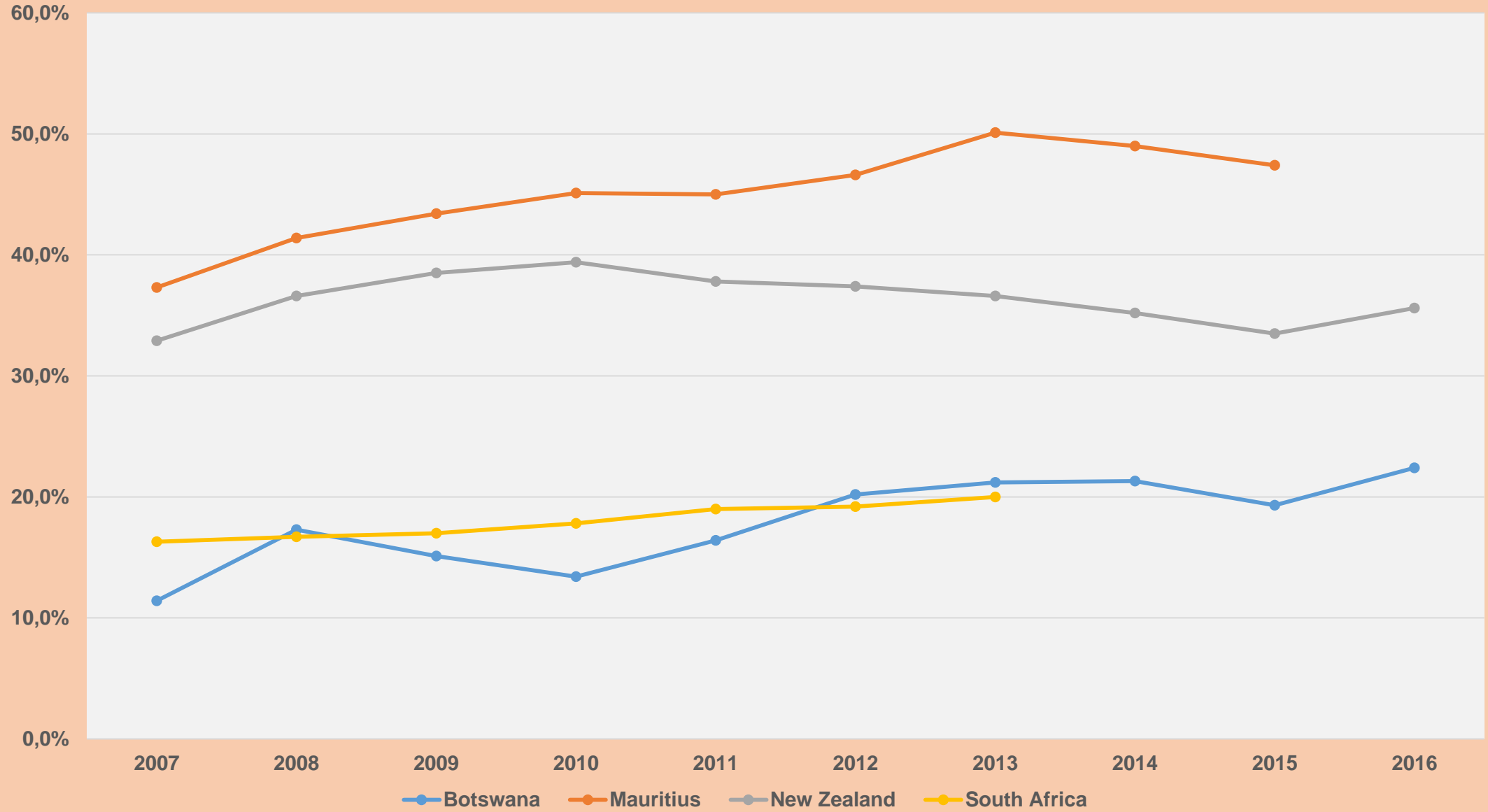
## Percentage Share of Enrolment by Broad Groups of Education 2009/10 - 2016/17

ISCED Broad Groups of Education	2012/13	% Share	2013/14	% Share	2014/15	% Share	2015/16	% Share	2016/17	% Share
Agriculture	1,324	<b>2.3</b>	1,139	<b>1.9</b>	940	<b>1.6</b>	843	<b>1.5</b>	936	<b>1.6</b>
Education	8,089	14.1	7,883	13.0	7,726	12.8	5,729	10.1	4,980	8.4
Engineering, Manufacturing & Construction	3,939	6.9	6,218	10.3	7,297	12.0	7,704	13.6	9,818	16.5
Health & Welfare	4,459	7.8	3,944	6.5	4,100	6.8	6,133	10.9	7,818	13.2
Humanities & Arts	3,875	6.7	4,234	7.0	3,987	6.6	2,770	4.9	3,240	5.5
Science	8,997	15.7	10,037	15.8	9,229	15.2	6,993	12.4	6,367	10.8
Services	1,759	3.1	3,154	6.0	3,726	6.2	4,070	7.2	3,874	6.6
Social Sciences, Business & Law	25,005	<b>43.5</b>	23,761	<b>39.3</b>	23,408	<b>38.6</b>	22,131	<b>39.2</b>	21,912	<b>37.1</b>
Unclassified	-	0.0	69	0.1	170	0.3	74	0.1	146	0.2
<b>GRAND TOTAL</b>	<b>57,447</b>	<b>100</b>	<b>60,439</b>	<b>100</b>	<b>60,583</b>	<b>100</b>	<b>56,447</b>	<b>100</b>	<b>59,091</b>	<b>100</b>

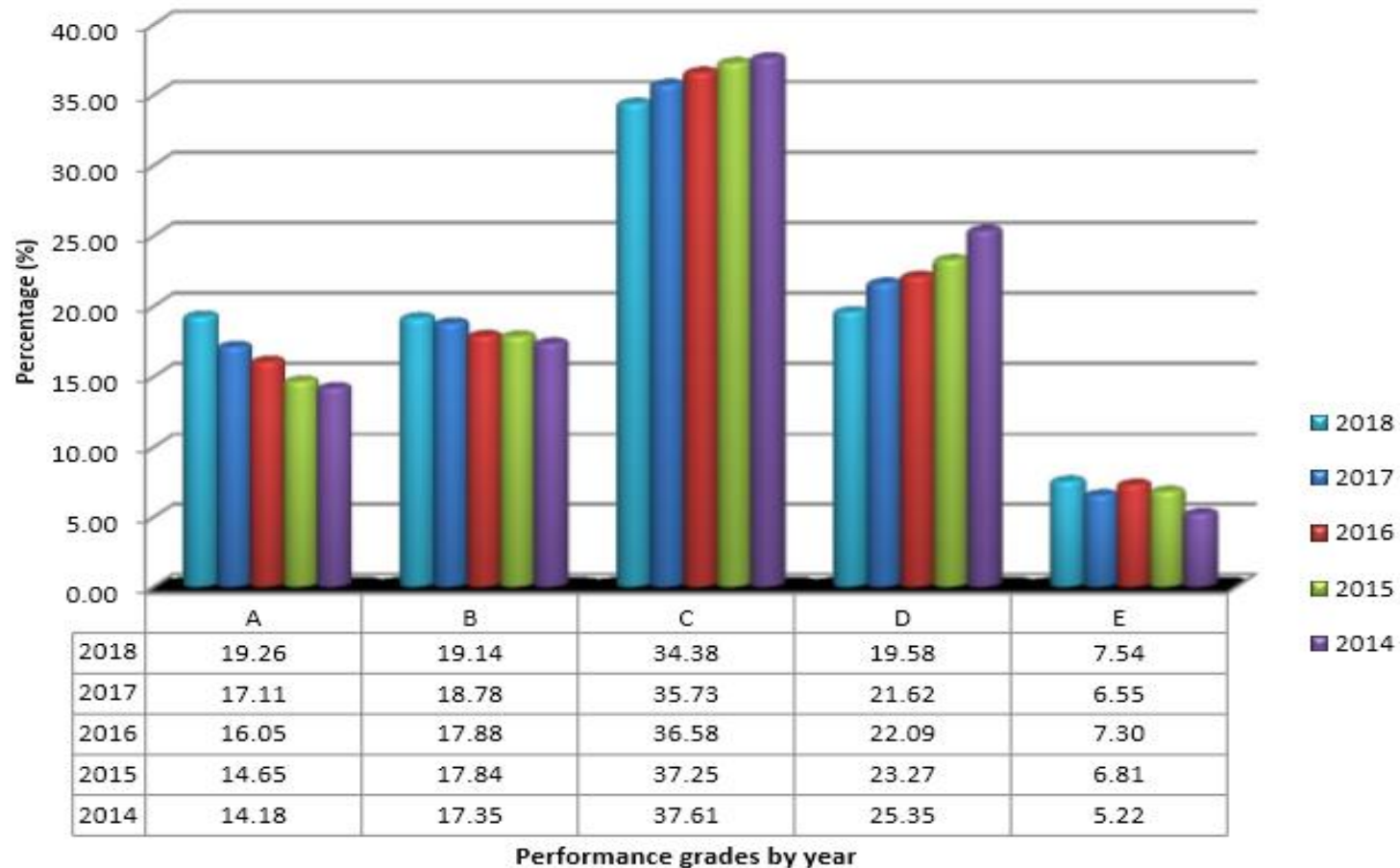
Agriculture constituted the lowest proportion of total enrolment, with less than 2.0% of total tertiary education enrolment across the years except for 2012/13 which was at 2.3%.

From 2012/13 to 2016/17 Academic years, the Social Sciences, Business & Law field of education had the highest proportion of total enrolment in tertiary education institutions; constituting more than 37% across the years.

## Gross Tertiary Enrolment Ratio –Regional and International Comparisons



**Figure 2.2: Comparison of PSLE overall performance in 2018, 2017, 2016, 2015 and 2014**



In 2018 performance at grade A increased by 2.15%, from 17.11% 2017 in 19.26% in 2018. Percentage of candidates obtaining grade B has also slightly improved by 0.36%, from 18.78 in 2017 to 19.14% in 2018. Candidates at Grade C declined by 1.35% from 35.73% in 2017 to 34.38% in 2018. Cumulatively, the percentage of credit pass grades (A-C) is 72.78% compared to 71.62% of 2017.